



130

Construction & Safety

- Designed specifically for New Zealand
- Coated steel frame
- Lightweight aluminium cladding
- Door and awning on correct side for NZ
- 240v Wiring throughout
- Steel outriggers to support outside walls
- Smooth vinyl roof
- Fully insulated
- 12v converter with charger & tow vehicle bridge
- 30-Amp power supply
- Electric Brakes with break-away protection
- Rear drag shields
- Single axle with independent suspension
- Lockable LPG cylinder compartment
- Smoke detector
- Integral dead-bolt on door
- Mounted fire-extinguisher
- Easy fold out access-steps
- Front & Rear jacks
- Superior chassis construction
- Electronic systems monitor ie. Battery and tank levels

Comfort & Convenience

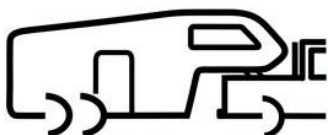
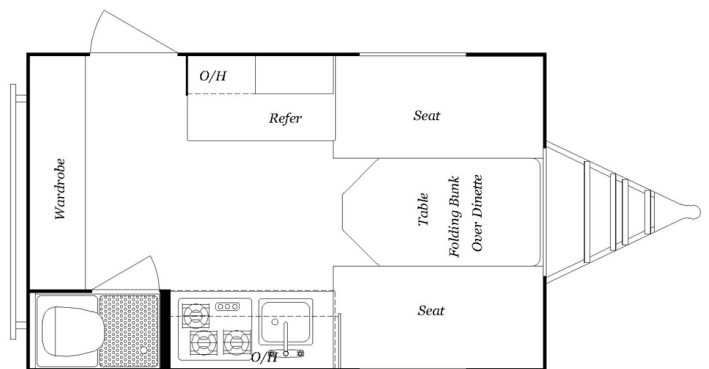
- Flush toilet
- Shower cubicle
- Extractor fan in bathroom
- Superb cupboards and storage throughout
- Separate door and window fly-screens
- Excellent 12v lighting
- Bonus external snap-fitting LPG outlet for BBQ etc
- 27L hot water heater
- Microwave compartment
- 3-burner range
- Power range-hood with light
- Efficient gas fridge/freezer
- On-demand water pump
- Central heating throughout
- Privacy curtain for bedroom
- Bed duvet
- Pre-wired for air-conditioner
- Exterior 240v plug
- Outside shower
- 2 minute sun-blind awning
- Quality C/D stereo
- Large external access storage locker

Specifications

130	Imperial	Metric
Axle Weight	1835 lbs	834 kg
Hitch Weight	190 lbs	86 kg
Cargo Capacity	885 lbs	402 kg
Height	6'6"	1.98 m
Body Length	12'6"	3.77 m
Width	7'6"	2.31 m
Fresh Water	26 gal	118 L
Grey Water	8 gal	36 L
Black Water	8 gal	36 L
Tire Size	13"	

Approximate measurements

\$25,000 incl WoF, Reg & Brake controller



Hodge RV Co Ltd
www.HodgeRV.co.nz
 (03) 3498025
 021 502458