

F-273

Construction & Safety

- Designed specifically for New Zealand
- Coated steel frame
- Lightweight fibreglass cladding
- **Door and awning on USA side**
- 240v Wiring throughout
- Steel outriggers to support outside walls
- Smooth vinyl roof
- Fully insulated
- 12v converter with charger & tow vehicle bridge
- 30-Amp power supply
- Electric Brakes with break-away protection
- Tandem axle with independent suspension
- Lockable LPG cylinder compartment
- Smoke detector
- Integral dead-bolt on door
- Mounted fire-extinguisher
- Easy fold out access-steps
- Electric front landing jacks
- Superior chassis construction
- Electronic systems monitor ie. Battery and tank levels
- Adjustable king-pin height
- Safer fifth-wheel towing characteristics

Comfort & Convenience

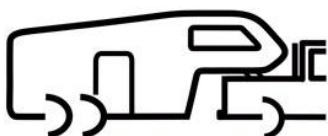
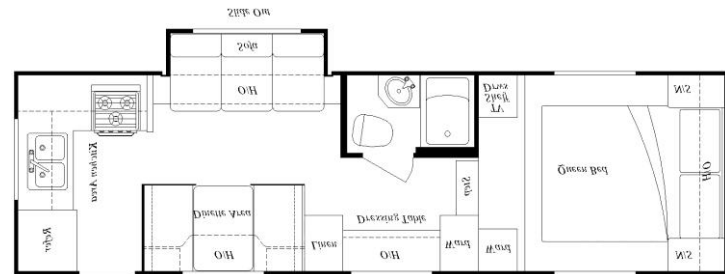
- Flush toilet
- Separate shower cubicle
- Extractor fan in bathroom
- Bathroom sink and vanity
- Permanent queen-size bed
- Superb cupboards and storage throughout
- Separate door and window fly-screens
- Excellent 12v lighting
- Bonus external snap-fitting LPG outlet for BBQ etc
- 22L hot water heater
- Microwave compartment
- 3-burner range & oven
- Power range-hood with light
- Efficient gas fridge/freezer
- On-demand water pump
- Central heating throughout
- Wind-up TV antennae
- Privacy curtain for bedroom
- Bed duvet
- Pre-wired for air-conditioner
- Exterior 240v plug
- Outside shower
- 2 minute sun-blind awning
- Entrance lighting
- Quality C/D stereo
- Large external access storage locker

F 273	Imperial	Metric
Axle Weight	4411 lbs	2005 kg
Hitch Weight	1082 lbs	492 kg
Cargo Capacity (max)	1430 lbs	650 kg
Height	6'4"	1.93 m
Body Length	27'3"	8.30 m
Width	7'6"	2.31 m
Fresh Water	31 US gal	118 L
Grey Water	30 US gal	114 L
Black Water	30 US gal	114 L

\$77,990 Price Inc GST, Hitch, WOF, Reg & Elec. Brakes

This unit is \$7000 cheaper due to the door and awning being on the wrong side.

Approximate measurements



Hodge RV Co Ltd
www.HodgeRV.co.nz
 (03) 3498025
 021 502458